

Technical data **VE4100**

CLAMPING UNIT		VE4100
Clamping force	kN	4100
Toggle stroke	mm	660
Min. mold height	mm	250
Max. mold height	mm	710
Max. mold opening stroke	mm	1370
Space between tie bars	mm	740×740
Min. mold dimension	mm	480×480
Ejector stroke	mm	160
Ejector force	kN (tf)	58.8 (6.0)
Mold platen dimension	mm	1080×1080

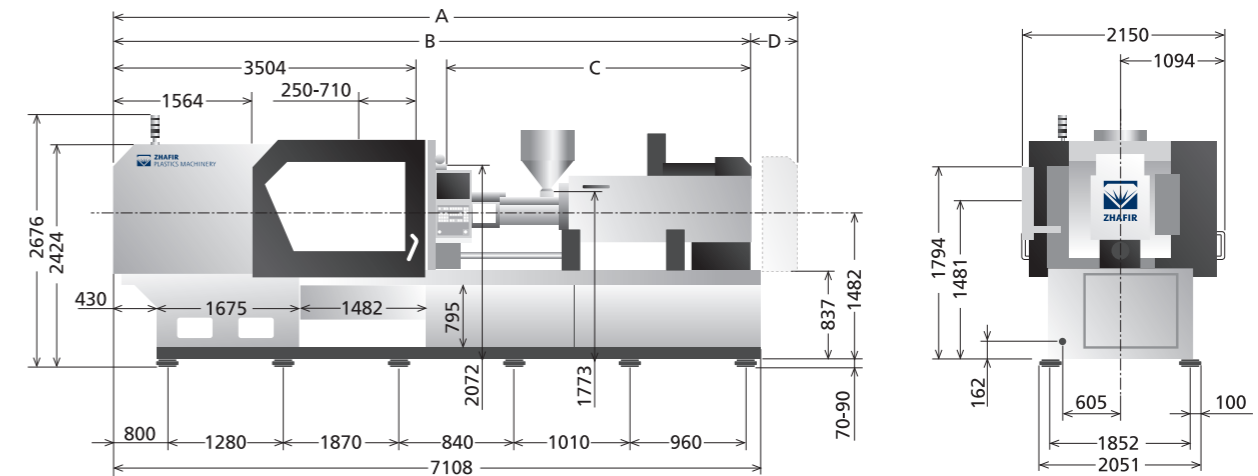
INJECTION UNIT		1100h			1100			1700		
		A	B	C	A	B	C	A	B	C
Screw diameter	mm	50	55	60	50	55	60	60	65	70
Screw L/D ratio	L/D	22	20	18.3	22	20	18.3	21.6	20	18.6
Shot size (theoretical)	cm ³	471	570	678	471	570	678	792	929	1078
Injection weight (PS)	g	428	518	617	428	518	617	720	845	980
Injection speed	mm/s	200			150			140		
Injection rate (PS)	g/s	357	432	514	267	323	385	360	423	490
Injection pressure	MPa	218	180	151	206	170	143	210	180	155
	bar	2220	1830	1540	2100	1730	1460	2140	1830	1580
Holding pressure	MPa	194	160	134	194	160	134	187	160	138
	bar	1980	1630	1360	1980	1630	1360	1910	1630	1410
Screw speed	rpm	300			300			250		
Plasticizing capacity (PS)	g/s	42.0	56.0	71.0	42.0	56.0	71.0	60.0	70.0	85.0
Nozzle touch force	kN (tf)	54(5.5)								
Nozzle movement distance	mm	470			470			500		
Heating power	kW	16.7			16.7			21.4		

OTHERS		1100h, 1100	1700
Connection power	kW/A	62KW/110A	72KW/129A
Hopper capacity	l	50	50
Machine dimension (l x w x h)	m	7.36×2.15×2.67	7.82×2.15×2.67
Machine weight	t	17.2	18.5

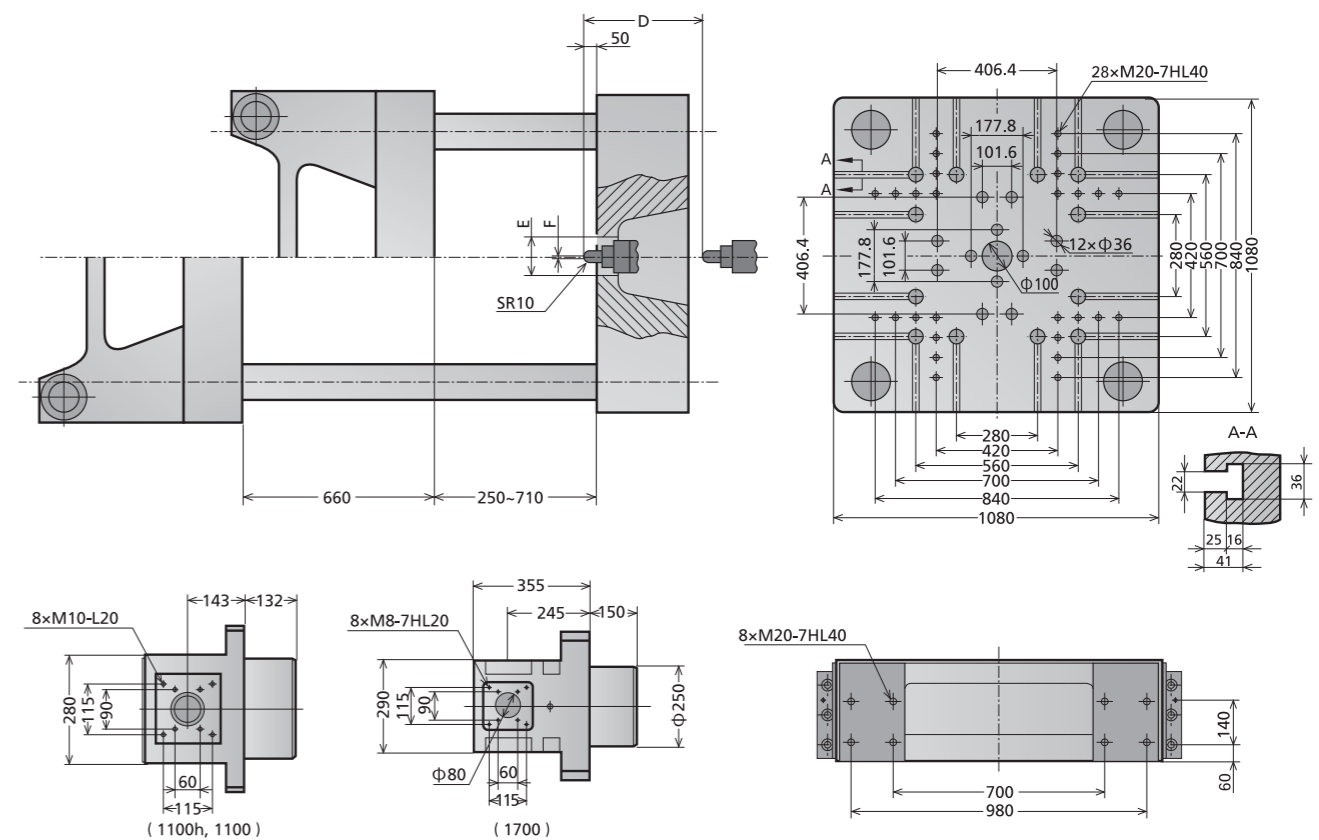
We reserve the right to make changes as a result of further technical advantages.

unit: mm

Machine dimensions VE4100



Platen dimensions VE4100



	A	B	C	D	E	F
1100h, 1100	7355	6685	3051	470	Φ160	Φ3
1700	7824	7324	3490	500	Φ160	Φ3