

# Technical data **VE400**

CLAMPING UNIT		VE400
Clamping force	kN	400
Toggle stroke	mm	235
Min. mold height	mm	150
Max. mold height	mm	320
Max. mold opening stroke	mm	555
Space between tie bars	mm	320x280
Min. mold dimension	mm	205x180
Ejector stroke	mm	60
Ejector force	kN (tf)	9.8 (1.0)
Mold platen dimension	mm	470x420

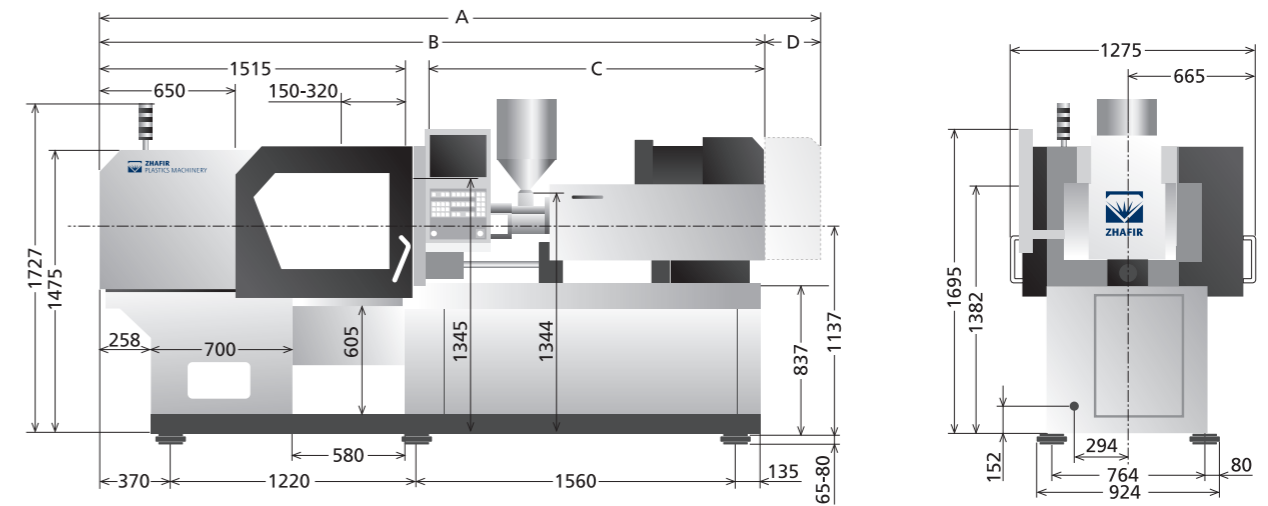
INJECTION UNIT		80h			80		
		A	B	C	A	B	C
Screw diameter	mm	18	22	26	18	22	26
Screw L/D ratio	L/D	20	20	17	20	20	17
Shot size (theoretical)	cm <sup>3</sup>	19	36	50	19	36	50
Injection weight (PS)	g	17.3	32.8	45.5	17.3	32.8	45.5
Injection speed	mm/s	350			150		
Injection rate (PS)	g/s	81	121	169	34	51	72
Injection pressure	MPa	280	220	157	280	220	157
	bar	2850	2240	1600	2850	2240	1600
Holding pressure	MPa	220	175	125	220	175	125
	bar	2240	1780	1270	2240	1780	1270
Screw speed	rpm	400			400		
Plasticizing capacity (PS)	g/s	3.8	6.0	8.8	3.8	6.0	8.8
Nozzle touch force	kN (tf)	9.8 (1.0)					
Nozzle movement distance	mm	290					
Heating power	kW	3.8	5.4	5.4	3.8	5.4	5.4

OTHERS		80h	80
Connection power	kW/A	19KW/34A	12KW/21.4A
Hopper capacity	l	15	15
Machine dimension (l x w x h)	m	3.59x1.27x1.73	
Machine weight	t	2.8	

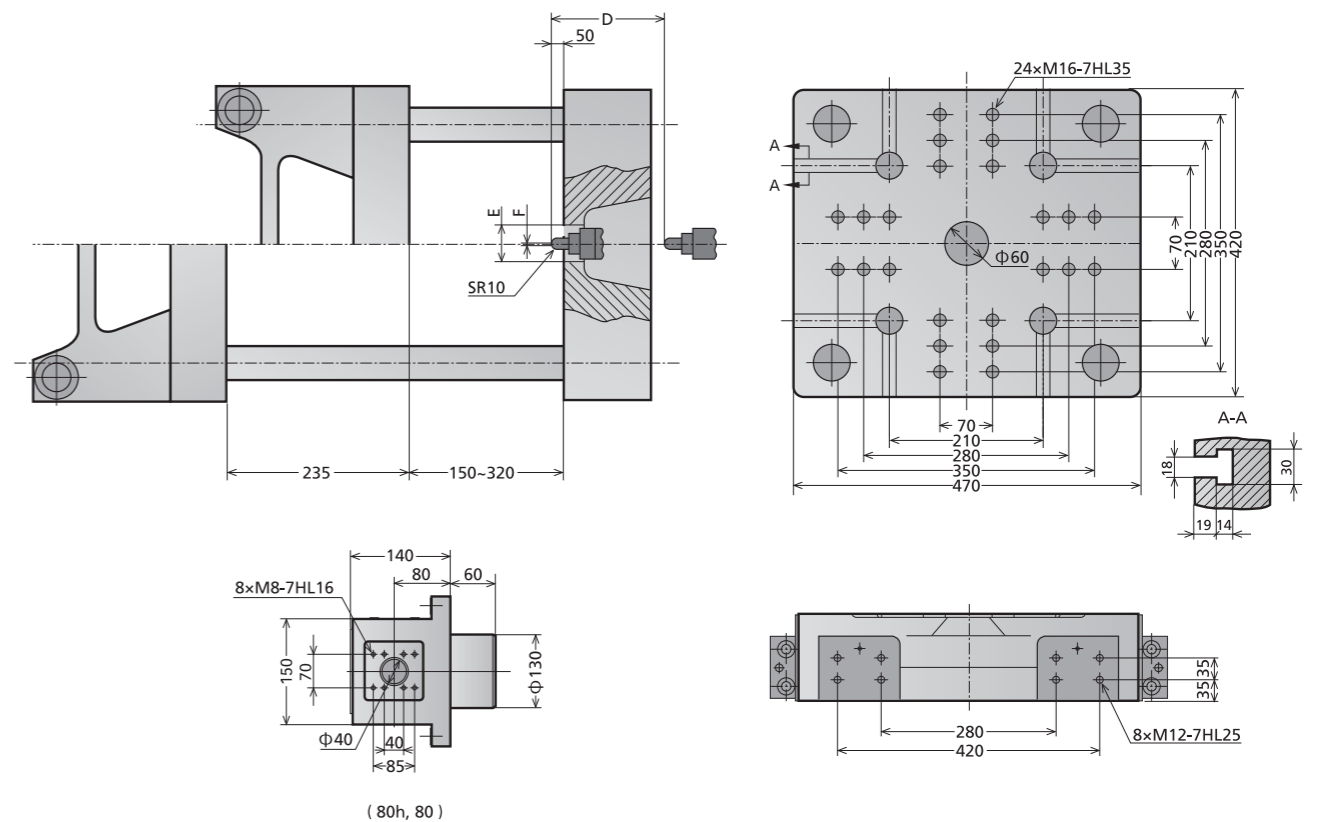
We reserve the right to make changes as a result of further technical advantages.

unit: mm

## Machine dimensions VE400



## Platen dimensions VE400



	A	B	C	D	E	F
80h, 80	3590	3300	1625	290	Φ100	Φ2