

# Technical data VE3000

| CLAMPING UNIT            |         | VE3000     |
|--------------------------|---------|------------|
| Clamping force           | kN      | 3000       |
| Toggle stroke            | mm      | 600        |
| Min. mold height         | mm      | 240        |
| Max. mold height         | mm      | 640        |
| Max. mold opening stroke | mm      | 1240       |
| Space between tie bars   | mm      | 670×620    |
| Min. mold dimension      | mm      | 435×400    |
| Ejector stroke           | mm      | 150        |
| Ejector force            | kN (tf) | 58.8 (6.0) |
| Mold platen dimension    | mm      | 1000×950   |

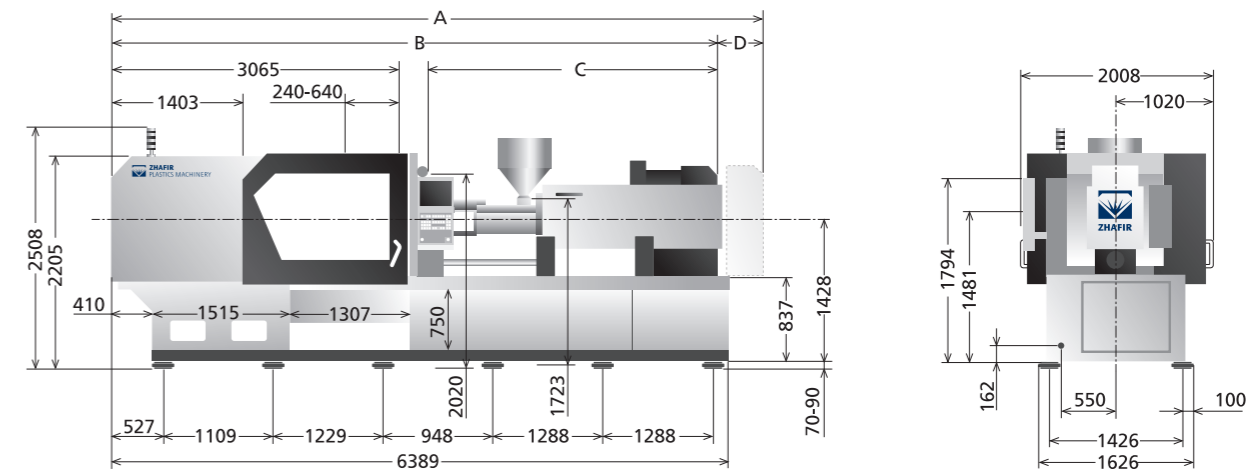
| INJECTION UNIT             |                 | 1100h   |      |      | 1100 |      |      | 1400 |      |      |
|----------------------------|-----------------|---------|------|------|------|------|------|------|------|------|
|                            |                 | A       | B    | C    | A    | B    | C    | A    | B    | C    |
| Screw diameter             | mm              | 50      | 55   | 60   | 50   | 55   | 60   | 55   | 60   | 65   |
| Screw L/D ratio            | L/D             | 22      | 20   | 18.3 | 22   | 20   | 18.3 | 21.8 | 20   | 18.5 |
| Shot size (theoretical)    | cm <sup>3</sup> | 471     | 570  | 678  | 471  | 570  | 678  | 617  | 735  | 863  |
| Injection weight (PS)      | g               | 428     | 518  | 617  | 428  | 518  | 617  | 562  | 668  | 785  |
| Injection speed            | mm/s            | 200     |      |      | 150  |      |      | 150  |      |      |
| Injection rate (PS)        | g/s             | 357     | 432  | 514  | 267  | 323  | 385  | 323  | 385  | 452  |
| Injection pressure         | MPa             | 218     | 180  | 151  | 206  | 170  | 143  | 214  | 180  | 153  |
|                            | bar             | 2220    | 1830 | 1540 | 2100 | 1730 | 1460 | 2180 | 1830 | 1560 |
| Holding pressure           | MPa             | 194     | 160  | 134  | 194  | 160  | 134  | 190  | 160  | 136  |
|                            | bar             | 1980    | 1630 | 1360 | 1980 | 1630 | 1360 | 1940 | 1630 | 1390 |
| Screw speed                | rpm             | 300     |      |      | 300  |      |      | 300  |      |      |
| Plasticizing capacity (PS) | g/s             | 42.0    | 56.0 | 71.0 | 42.0 | 56.0 | 71.0 | 56.0 | 71.0 | 81.0 |
| Nozzle touch force         | kN (tf)         | 54(5.5) |      |      |      |      |      |      |      |      |
| Nozzle movement distance   | mm              | 470     |      |      | 470  |      |      | 470  |      |      |
| Heating power              | kW              | 16.7    |      |      | 16.7 |      |      | 19.1 |      |      |

| OTHERS                        |      | 1100h, 1100    | 1400           |
|-------------------------------|------|----------------|----------------|
| Connection power              | kW/A | 62KW/110A      | 56KW/101A      |
| Hopper capacity               | l    | 50             | 50             |
| Machine dimension (l x w x h) | m    | 6.80×2.00×2.51 | 6.96×2.00×2.51 |
| Machine weight                | t    | 14.3           | 15.7           |

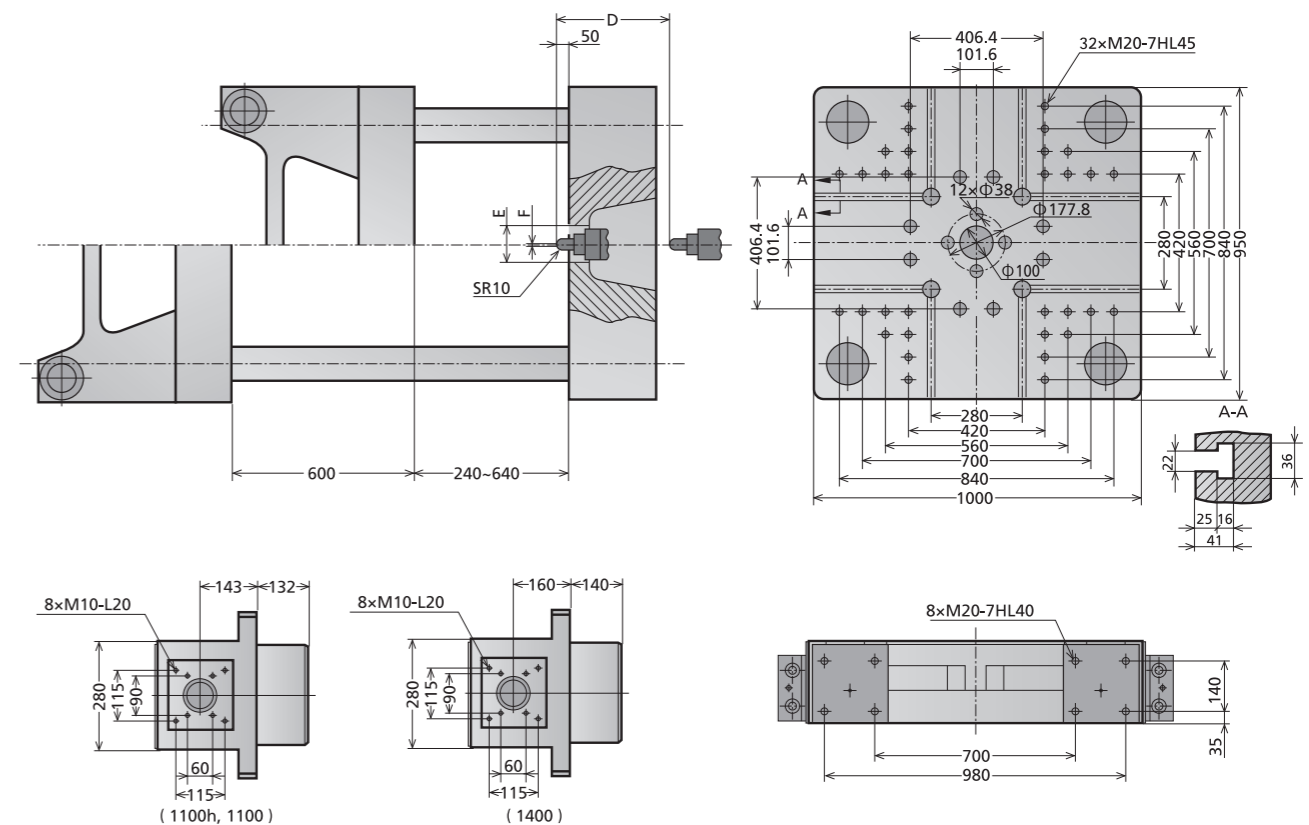
We reserve the right to make changes as a result of further technical advantages.

unit: mm

## Machine dimensions VE3000



## Platen dimensions VE3000



|             | A    | B    | C    | D   | E    | F  |
|-------------|------|------|------|-----|------|----|
| 1100h, 1100 | 6803 | 6333 | 3051 | 470 | Φ160 | Φ3 |
| 1400        | 6963 | 6493 | 3211 | 470 | Φ160 | Φ3 |