

Technical data VE1500

CLAMPING UNIT		VE1500
Clamping force	kN	1500
Toggle stroke	mm	420
Min. mold height	mm	180
Max. mold height	mm	520
Max. mold opening stroke	mm	940
Space between tie bars	mm	520x470
Min. mold dimension	mm	335x305
Ejector stroke	mm	120
Ejector force	kN (tf)	34.3 (3.5)
Mold platen dimension	mm	770x730

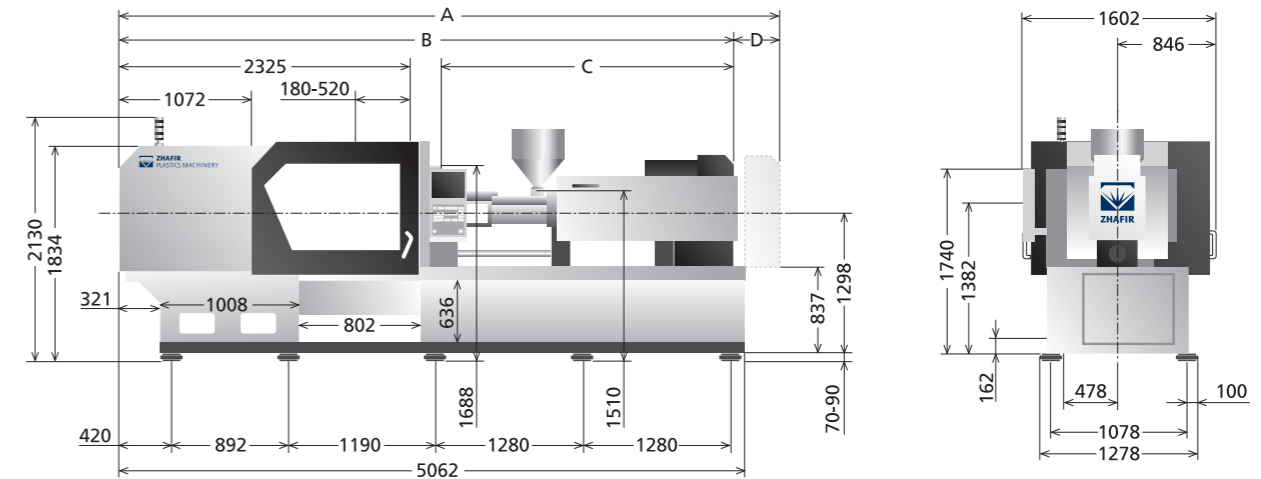
INJECTION UNIT	300h			300			430h			430			
	A	B	C	A	B	C	A	B	C	A	B	C	
Screw diameter	mm	32	36	40	32	36	40	36	40	45	36	40	45
Screw L/D ratio	L/D	22.5	20	18	22.5	20	18	23.3	21	18.7	23.3	21	18.7
Shot size (theoretical)	cm ³	116	147	182	116	147	182	173	213	270	173	213	270
Injection weight (PS)	g	106	134	166	106	134	166	157	194	246	157	194	246
Injection speed	mm/s	300			150			300			150		
Injection rate (PS)	g/s	220	277	342	110	139	171	277	342	434	139	171	217
Injection pressure	MPa	253	200	162	253	200	162	247	200	158	247	200	158
	bar	2580	2040	1650	2580	2040	1650	2520	2040	1610	2520	2040	1610
Holding pressure	MPa	202	160	130	202	160	130	197	160	126	197	160	126
	bar	2060	1630	1320	2060	1630	1320	2010	1630	1280	2010	1630	1280
Screw speed	rpm	400			400			400			400		
Plasticizing capacity (PS)	g/s	16.0	22.0	30.0	16.0	22.0	30.0	22.0	30.0	42.0	22.0	30.0	42.0
Nozzle touch force	kN (tf)	29.4(3.0)											
Nozzle movement distance	mm	350						380					
Heating power	kW	8.6			8.6			11.1			11.1		

OTHERS		300h, 300	300	430h, 430	430				
Connection power	kW/A	36.7KW/65A		25.7KW/46A		43.3KW/77A		32.3KW/57A	
Hopper capacity	l	25		25		25		25	
Machine dimension (l x w x h)	m	5.16x1.60x2.13				5.38x1.60x2.13			
Machine weight	t	7.0				7.6			

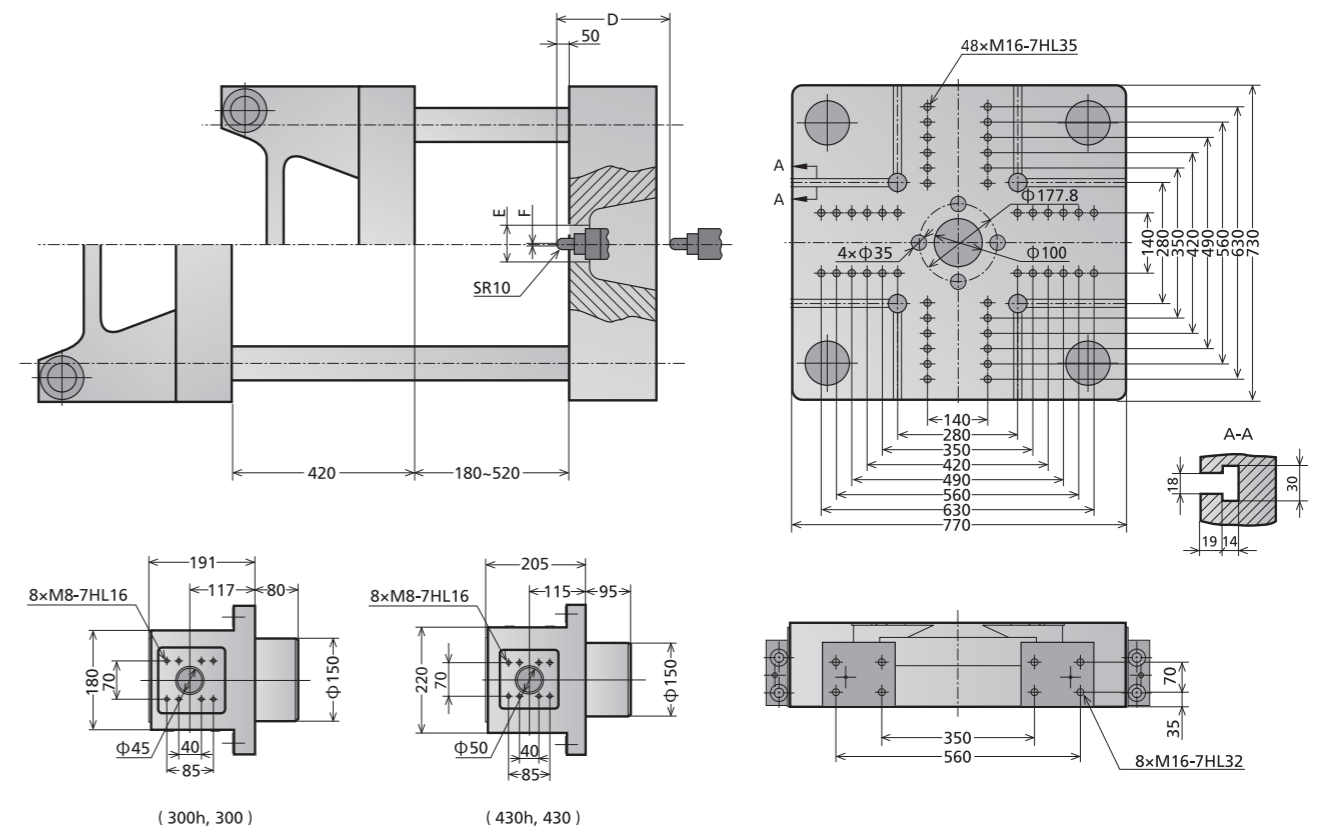
We reserve the right to make changes as a result of further technical advantages.

unit: mm

Machine dimensions VE1500



Platen dimensions VE1500



	A	B	C	D	E	F
300h, 300	5162	4812	2225	350	Φ125	Φ3
430h, 430	5385	500	2418	380	Φ125	Φ3